

Who Needs PAT Testing?

- Accountants
- Beauty Salons
- Bingo Clubs
- Business Centres
- Butchers
- Card & Poster Shops
- Chemists
- Child Minders
- Clubs & Associations
- Day Nurseries
- Dentists
- Doctors
- Fish & Chip Shops
- Florists
- Garage Services
- Golf Clubs
- Guest Houses
- Hairdressers
- Health Clubs
- Hotels
- Housing Associations & Trusts
- Letting Agents
- Newsagents
- Nightclubs
- Nursery Schools
- Nursing Homes
- Petrol Filling Stations
- Pharmacies
- Public Houses
- Residential & Retirement Homes
- Restaurants
- Residential Care Homes
- Schools & Colleges
- Solicitors
- Sports Clubs & Associations
- Take Away Food Shops
- Vets
- Any Commercial, retail and Industrial Premises

What To Do Next?

This is the easy part !

- Call us on 01283 229873 and we can offer friendly help and advice over the phone.
- Call us on 01283 229873 and request a FAX back form. You can estimate your portable appliances and we will prepare a free quotation. Remember everything with a plug fitted !
- Call us on 01283 229873 and we can arrange for one of our Engineers to visit and "Walk Through" your premises to give advice on your PAT requirements. There is no obligation at this stage and we can then advise a solution suitable for you.



**Don't put your staff
and visitors at risk
call TestSafe now:
01283 229873**



TestSafe Limited, Bretby Business Park, Ashby Road, Burton on Trent DE15 0YZ
Tel: 01283 229873
Fax: 01283 553094
Email: sales@test-safe.co.uk

SHOCKING STORIES

FROM THE WORKPLACE...



...INJURY, PROSECUTION, LITIGATION

or invalid insurance are real possibilities if you cannot demonstrate due diligence that you have taken every reasonable precaution to ensure that your electrical items are safe.

Here are some recent examples of organisations that failed to comply with their Health & Safety obligations:



Worker received shock whilst using a pressure water washing machine

A worker received a 240 Volt electric shock whilst using a pressure water washing machine. An investigation found the company had failed to a) maintain the washer, b) provide a safe system of work and c) notify the existence of the factory to HSE. There was a high potential for serious injury from contact with 240 Volt electricity supply when using water washing equipment.

www.hse.gov.uk/electricity/maintenance/washingmachine.htm

Cause of fire attributed to electrical appliance

The fire that destroyed the Brigshaw High School sports hall this week is believed to have been caused by a faulty heater. The fire at the Allerton Bywater, Yorkshire, school was extinguished by 70 firefighters before it could destroy the rest of the buildings.

www.safetynews.co.uk

Health and safety adviser made 'a scapegoat for the failings of the company'

H&S Manager of the restaurant chain Fatty Arbuckles, has been successfully prosecuted by Lincoln City Council for a breach of Section 7 of the Health and Safety at Work Act in the circumstances of the death of a restaurant employee, who was electrocuted at a restaurant in Lincoln in 1998. The employee who was employed as a kitchen assistant, was electrocuted as he moved a defective plate warmer.

Other employees had reported shocks from the item but no action was taken

www.safetynews.co.uk

Shocking isn't it !

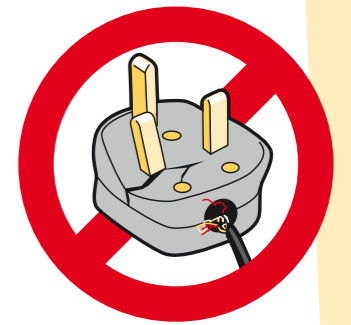
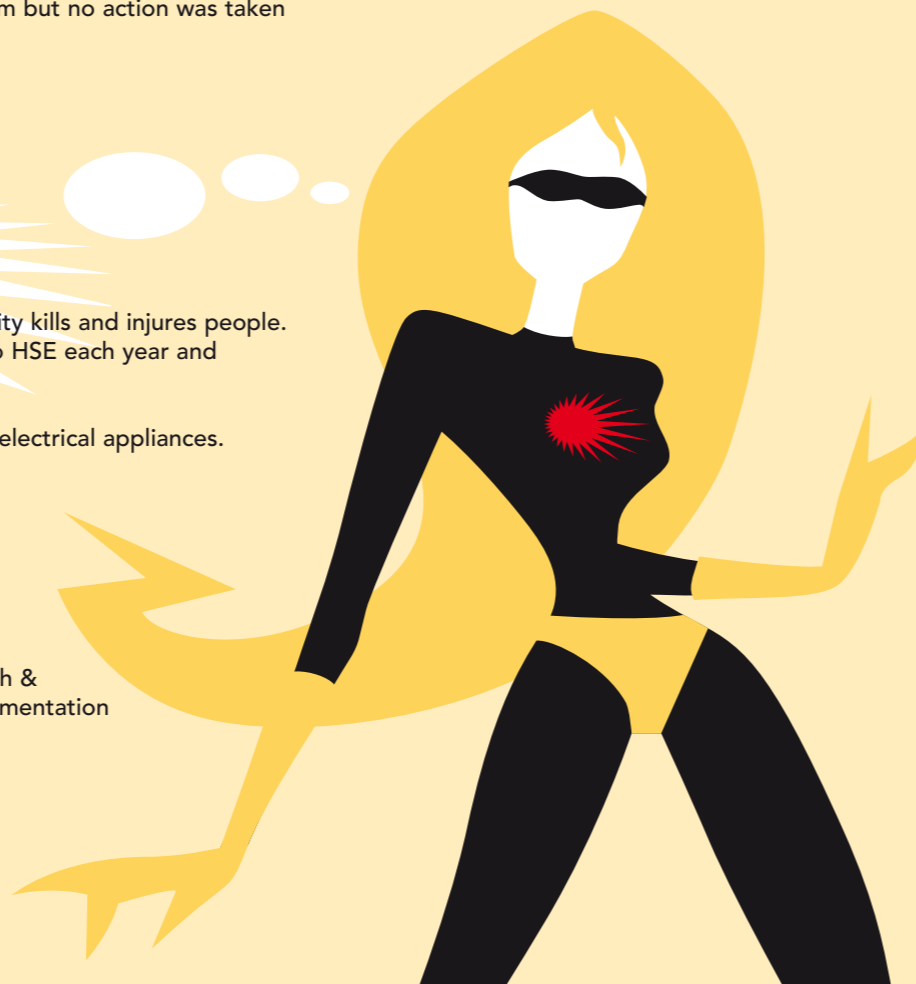
FACT: The Health & Safety Executive states that Electricity kills and injures people. Around 1000 electrical accidents at work are reported to HSE each year and people can die of their injuries as a result of :

- Use of poorly maintained electrical equipment;
- Fires started by poor electrical installations and faulty electrical appliances.

Source: www.hse.gov.uk/electricity

Don't Risk It !

TestSafe bring peace of mind and compliance with Health & Safety Regulation through professional testing and documentation of all your portable appliances.



What is Portable Appliance Testing (PAT)?

PAT is the regular visual inspection and testing of all electrical equipment that is connected to electrical sockets via a plug. PAT is preventative maintenance, it helps to reduce the risk of electric shock, burns and faults which could cause fire, or explosion where electricity is a source of ignition.

What are the Regulations for PAT testing?

- Health & Safety at Work etc. Act 1974
- The Electricity at Work Regulations 1989
- The Provision and Use of Work Equipment Regulations (PUWER) 1998 (Particularly regulation 6)
- Many Fire Services & Insurance Companies require companies to have a regular PAT inspection before safety certificates or policies are issued.

What do these Regulations Legally Require For Portable Appliances?

The Code of Practice for Inspection and Testing of Portable Electrical Appliances along with HSE guidance recommends a three level system of inspection that can produce a cost effective and practical method of maintenance of portable appliances, together with the creation and maintenance of proper records, these are:

- Regular User checking.
- Regular Formal visual inspections, determined by type and environment
- Regular Combined visual inspection and testing, determined by type and environment

Who is Responsible?

The Law demands that employers or "Duty Holders" ensure portable appliances are safe.

The "Duty Holder" responsible for ensuring the safety of equipment can include:

- Owner/Manager of a business/premises
- Employers & Self Employed
- Employees
- Appointed Person
- Users of Equipment
- Landlord/Letting Agent

How Can TestSafe Help?

TestSafe have fully trained staff, who provide a comprehensive, fully managed inspection and testing service. We can:

- Help you set up a procedure for training employees to complete user checks
- Help and train you to complete a regular visual inspection of portable appliances or alternatively offer our services to complete this for you
- Take responsibility for combined visual inspection and testing of your portable appliances using the very latest, calibrated instrumentation
- Provide detailed test reports and certification for compliance with regulations and insurance.
- Bring you peace of mind that you have complied with your "Duty of Care"

Do TestSafe Complete Remedial Work?

- Think of us like a dedicated portable appliance "MOT" tester. Our business is not to sell you new appliances or repair failed electrical equipment. This ensures you get a value for money service.
- However, most failed appliances are due to faulty plugs, cables or incorrect fuses. We will happily complete these minor repairs and re-test the appliances again, marking with a green PASS sticker.
- Appliances that have failed due to other reasons will be clearly marked with a red FAIL sticker and will be drawn to your attention.

We will advise if these items can be repaired or should be replaced.

